



Iowa's Innovative Dental, Medical, and Community Integration Activities

Iowa Diabetes + Wellness Summit
November 14, 2019

Kate LaFollette, RN (Frann Otte)

I have no conflict(s) with commercial interest companies to disclose.



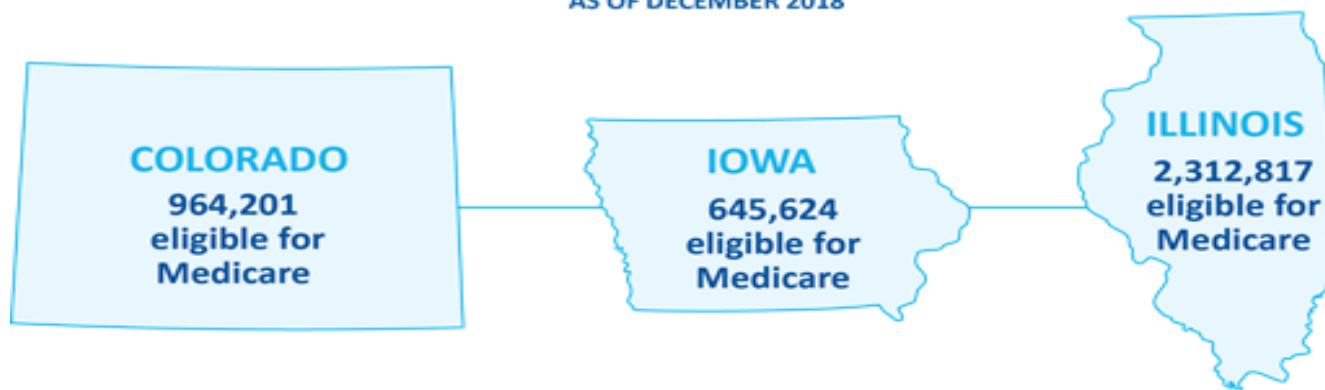


Telligen QIN-QIO Program

TELLIGEN QUALITY INNOVATION NETWORK QUALITY IMPROVEMENT ORGANIZATION (QIN-QIO)

**TOTAL NUMBER OF PERSONS ELIGIBLE
FOR MEDICARE = 3,922,642**

AS OF DECEMBER 2018



Data Source: <https://www.cms.gov/Research-Statistics-Data-and-Systems/Statistics-Trends-and-Reports/MCRAAdvPartDEnrolData/Monthly-Enrollment-by-State.html>

What We Do

AREAS OF FOCUS



Antibiotic Stewardship: Helping outpatient care settings prevent antibiotic overuse and misuse



Cardiac Health: Preventing heart attacks and strokes through evidence-based practice



Care Coordination and Medication Safety: Collaborating with communities to reduce avoidable hospitalizations



Diabetes Care: Providing diabetes self-management education classes and improve clinical outcomes



Immunizations: Promoting flu, pneumonia, and shingles vaccinations



Nursing Home Care: Using quality improvement strategies to improve care



Quality Payment Program: Helping Medicare providers transition from fee-for-service to value-based care



Transforming Clinical Practice Initiative: Conducting quality improvement assessments

Coordinated Care

Involves *deliberately organizing* patient care activities and *sharing information* among all concerned with a patient's care to achieve **safer and more effective care**

From AHRQ (Agency for Healthcare Research and Quality)

Why This Matters Now



The Determinants of Health

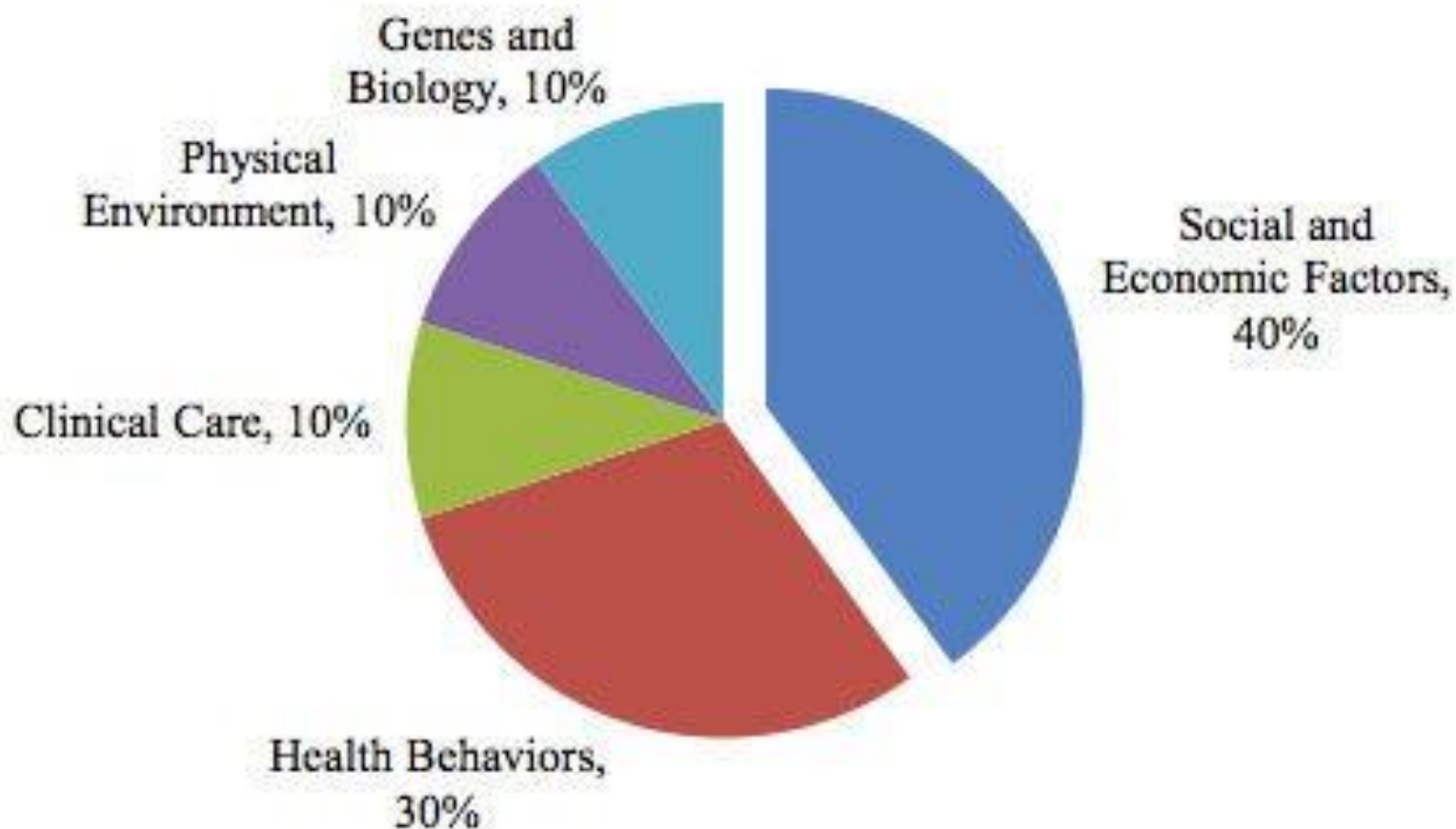


Figure 1

Social Determinants of Health

Economic Stability	Neighborhood and Physical Environment	Education	Food	Community and Social Context	Health Care System
Employment	Housing	Literacy	Hunger	Social integration	Health coverage
Income	Transportation	Language	Access to healthy options	Support systems	Provider availability
Expenses	Safety	Early childhood education		Community engagement	Provider linguistic and cultural competency
Debt	Parks	Vocational training		Discrimination	Quality of care
Medical bills	Playgrounds	Higher education		Stress	
Support	Walkability				
	Zip code / geography				

Health Outcomes

Mortality, Morbidity, Life Expectancy, Health Care Expenditures, Health Status, Functional Limitations

Oral Care IS Health Care



A night sky filled with stars, with a silhouette of a mountain range at the bottom. The text is overlaid on the sky.

*Knowing is not enough; we must apply.
Wishing is not enough; we must do.*

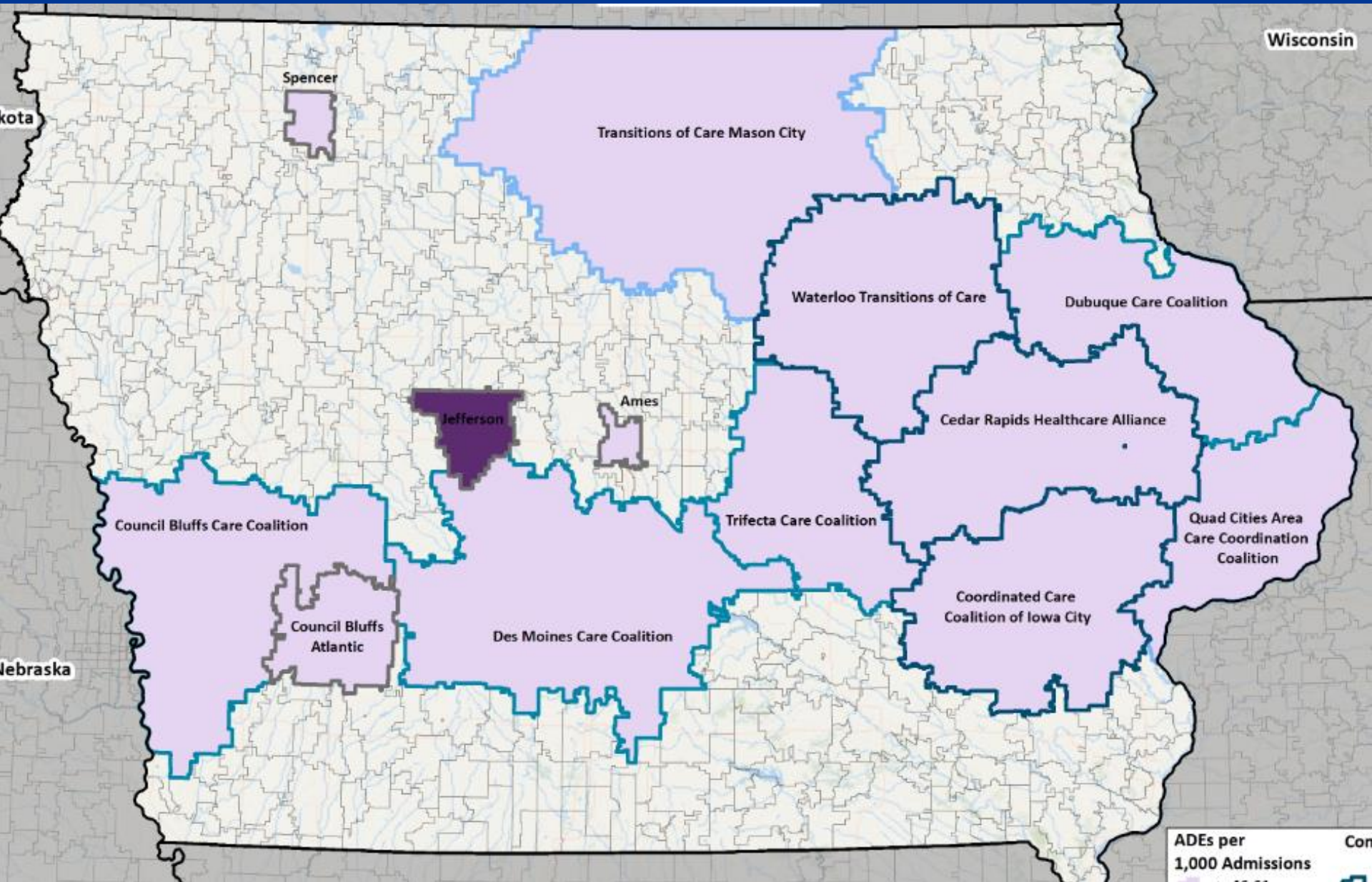
Johann Wolfgang von Goethe

Community Coalitions

A coalition is a union of people and organizations working to influence outcomes on a specific problem

Community Coalitions...

- Can conserve resources.
- Can accomplish objectives beyond the scope of any single organization
- Have greater credibility than individual organizations
- Provide a forum for sharing information
- Provide a range of advice and perspectives
- Build trust and consensus within a community



Contact Information

Kate LaFollette, RN

- klafollette@Telligen.com; 515-440-8210

Frann Otte, RN

- fotte@Telligen.com; 515-273-8807

Website

- <https://telligenqinqio.com/>

This material was prepared by Telligen, the Medicare Quality Innovation Network Quality Improvement Organization, under contract with the Centers for Medicare & Medicaid Services (CMS), an agency of the U.S. Department of Health and Human Services. The contents presented do not necessarily reflect CMS policy. This material is for informational purposes only and does not constitute medical advice; it is not intended to be a substitute for professional medical advice, diagnosis or treatment.. 11SOW-IA-C3-03/18/19-3303

